



Welcome to Reception

September 2026



*Dream, Believe, Achieve... and
Make a Difference*

Meet the Senior Leadership Team



Ms O'Sullivan
Headteacher



Mrs Taylor
Deputy Head



* Mrs Matharu
Assistant Headteacher



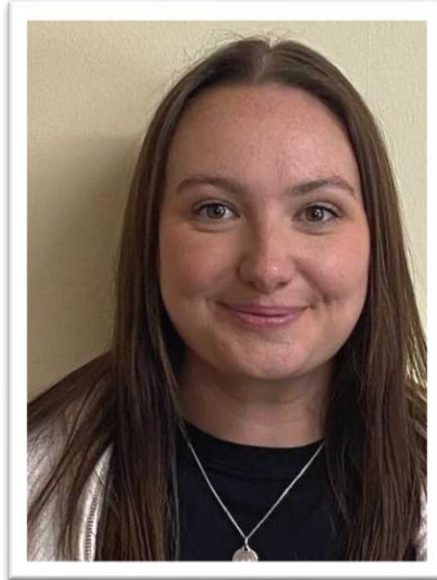
* Miss Ford
Inclusion Manager

Current Reception teachers...



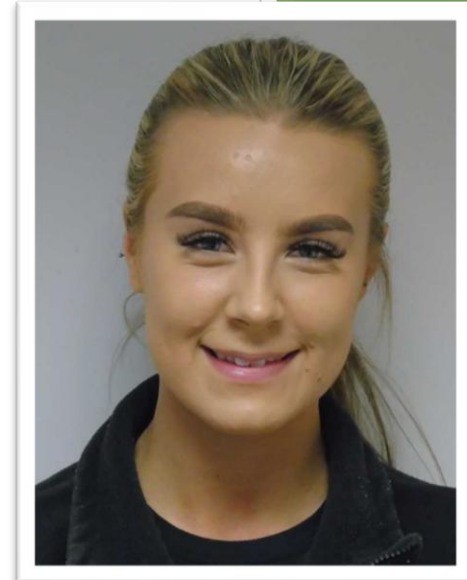
Class RP

Mrs Pemberton
Class Teacher and
Year leader



Class RT

Miss Turner
Class Teacher



Class RE

Mrs Elkins
Class Teacher



Mrs Kimmins
SEND and EYFS
Lead

The Deanesfield Golden Charter

We are gentle

We are kind and helpful

We listen

We are honest

We work hard

We look after property



*Dream, Believe, Achieve... and
Make a Difference*

Our Early Years vision

- Our curriculum offer in Reception
- Enriched and enhanced learning
- Learning through play

"Play is the work
of the child."

-Maria Montessori



- Our first topic and curriculum map



Dream, Believe, Achieve... and Make a Difference



SAVE THE DATE:

***Reception Curriculum Evening -
Thursday 24th September at
6.00pm***

Detailed information about how your child will learn and the core early skills will be shared at our Curriculum Talk.

The recipe to a successful transition...

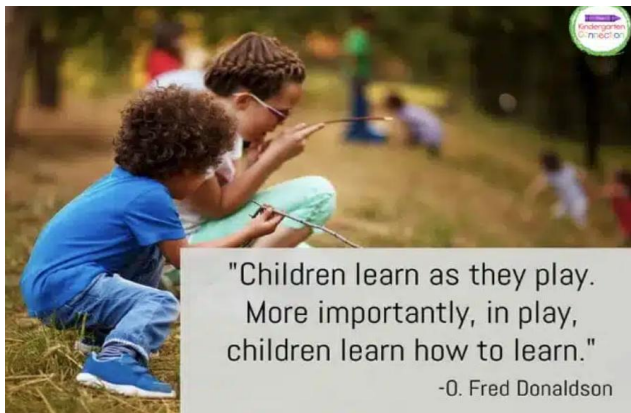
- Working in partnerships
- Lunchtime story session – Friday 3rd July
- Stay and Play sessions – Wednesday 15th and Thursday 16th
- Transition videos
- Official Start Date
- Is tailored to support individual children

* Refer to induction letter for further details and your allocated times and dates



A typical school day

- School starts from 8.40 – 3.20pm.
- Soft start from 8.40-8.50am
- Prompt start at 8.55am
- Lunch – 11.50am-12.50pm
- No playtime – learn through play
- Home time – 3.20pm.



"Children learn as they play.
More importantly, in play,
children learn how to learn."

-O. Fred Donaldson

School lunch provision

- Universal free school meals for all pupils.
- Lunch menu rotates every three weeks – hot or cold meal offer
- Children are free to choose a packed lunch on the days they prefer.
- First half term, Reception staff will support all children.



Uniform expectations

- **COMPULSORY** - high expectations that correct uniform is adhered to.
- Can be purchased from Angels in Rayners Lane, Adams in Ruilsip Manor OR order online through 'My Clothing'
- Appropriate footwear – no boots/must have good grip.
- Correct PE kit in a draw string bag only.
- No large back packs or key chains on bags.
- **Personalised water bottle and PE top – School will provide every child with their first school water bottle.**



Day to day communication...

- Daily communication
- Pupil progress meetings - at least termly
 - October - settling in focus
 - December - care call
 - February - progress focus
 - April - care call
- End of Reception report - July



How the school keeps you informed

- Friday Flyer



‘Reach more Parents’ APP

- School website
- ‘SchoolMoney’ cashless school.
- Google classroom - Overview of weekly learning
- Letter confirming all login details.



Breakfast and Afterschool provision

- Accessible for all children
- Operated by staff of Deanesfield Primary School
- Located on our school premises.
- Operates between 7.45am-8.45am (Breakfast Club); 3.20pm to 4.30pm or 6pm (can opt for an end time of either choices)

WHAT WE OFFER:

- Healthy breakfast
- Stimulating environment with outside play area
- All staff DBS checked, familiar adults and experienced.



Class fund

- **One-off yearly donation** at the start of the academic year via School Money.
- We will provide all classroom stationary and essential resources for all pupils in Nursery to Year 6 this academic year.
- Personalised school water bottle only – we will supply this (No home water bottles)
- All water bottles are cleaned regularly and topped up with fresh drinking water daily
- Class fund donation goes towards all resources as well as any end of year and Christmas celebrations.



Key policies:

- EYFS Policy
- Behaviour Policy
- Social Media Policy
- All policies are accessible via school website



Few General Reminders

1. Label all clothing
– small draw
string bag
2. Self – care needs
– build
independence
(toileting, getting dressed,
coats, etc)
3. Setting good
eating habits
4. Smooth entrance
in the morning.
5. Working in
partnership – talk
to us!
6. TALK
MORE...WATCH
LESS.
7. Transition videos



Dream, Believe, Achieve... and Make a Difference

Our expectations of you...

- Have trust in the professionals you have chosen for your child.
- Be respectful in all communications.
- Work co-operatively in partnership

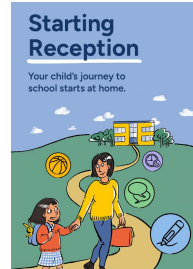


Dream, Believe, Achieve... and Make a Difference

Supportive links

<https://wordsforlife.org.uk/activities/countdown-to-school-or-nursery/>

<https://startingreception.co.uk/>



<https://foundationyears.org.uk/files/2021/09/What-to-expect-in-the-EYFS-complete-FINAL-16.09-compressed.pdf>

<https://www.nct.org.uk/baby-toddler/learning-talk-and-communication-your-baby/how-can-you-encourage-childs-language-development>

<https://speechandlanguage.org.uk/help-for-families/>

“**Words for Life**”



nct

Speech and Language UK
Changing young lives.

Dream, Believe, Achieve... and Make a Difference

Family Hubs and Children's Centres



Ready to Go!

A wonderful opportunity for both you and your child! Transitioning into nursery/school can be a big step, and these sessions are thoughtfully designed to make it smoother and more enjoyable.

Here are some highlights of what you can expect:

- **Learning and developing new skills:** Engaging activities to stimulate your child's curiosity and growth.
- **Increasing independence skills:** Helping your child become more self-reliant and confident.
- **Understanding more about separation anxiety:** Practical tips and strategies to ease the emotional transition.
- **Developing self-care skills:** Encouraging habits that promote personal well-being.

Sessions are available for children starting school/Nursery in September. Starting in June. Please call your local Children centre to book on and find out more information:

Coteford - 01895 556 682.

South Ruislip – 01895 558860

Harefield – 01895 277108



Five to thrive
champions



HILLINGDON
LONDON

www.hillingdon.gov.uk



Thank you and a huge welcome to Deanesfield Primary School



*“Play is the work of the
child.”*

Maria Montessori

NurturedNeurons.com

Dream, Believe, Achieve... and Make a Difference