



# Welcome to Reception September 2025



*Dream, Believe, Achieve... and  
Make a Difference*

# Meet the leadership team...



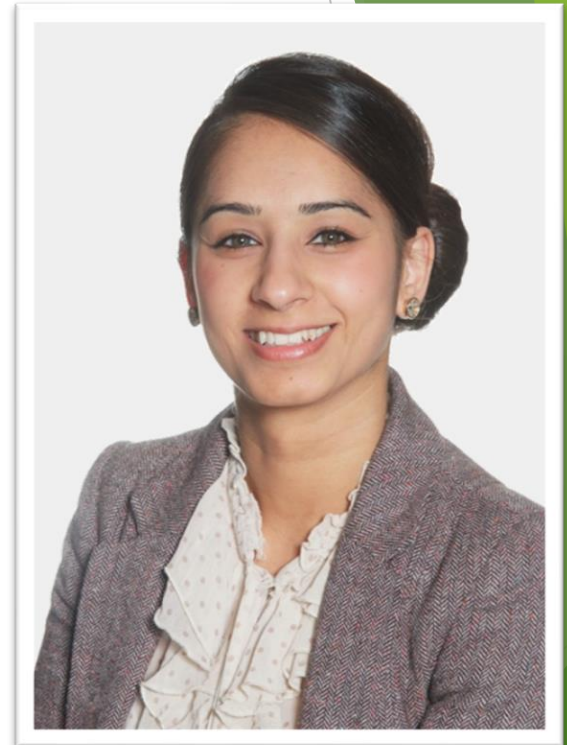
Ms O'Sullivan  
Headteacher



Mrs Taylor  
Deputy Head



Miss Ford  
Inclusion Manager



Mrs Matharu  
Head of Early Years  
and KS1

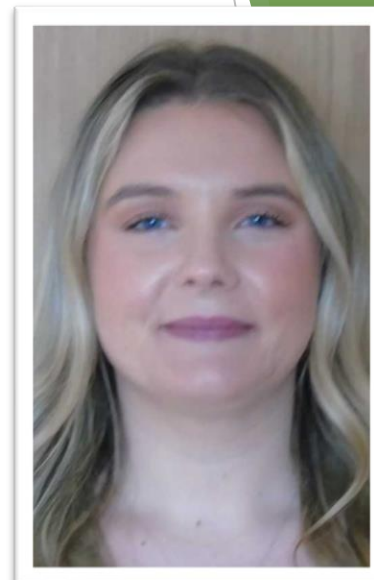
# *Current Reception teachers...*



**Class RP**  
Mrs Pemberton  
Class Teacher and  
Year leader



**Class RP**  
Mrs Parrott  
Class Teacher



**Class RK**  
Miss King  
Class Teacher



Ms McGrath  
EYFS Lead

# *The Deanesfield Golden Charter*

We are gentle

We are kind and helpful

We listen

We are honest

We work hard

We look after property



*Dream, Believe, Achieve... and  
Make a Difference*

# Our Early Years vision

- Our curriculum offer in Reception
- Enriched and enhanced learning
- Learning through play

"Play is the work  
of the child."

-Maria Montessori



- Our first topic and curriculum map



*Dream, Believe, Achieve... and Make a Difference*



**SAVE THE DATE:**

***Reception Curriculum Evening -  
Thursday 25<sup>th</sup> September at  
6.00pm***

Detailed information about how your child will learn and the core early skills will be shared at our Curriculum Talk.

# *The recipe to a successful transition...*

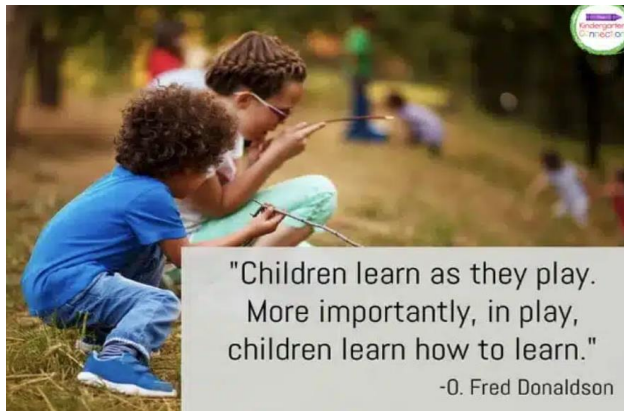
- Working in partnerships
- Lunchtime story sessions - 4<sup>th</sup> and 11<sup>th</sup> July
- Stay and Play sessions
- Transition videos
- Official Start Date
- Is tailored to support individual children

\* Refer to induction letter for further details and your allocated times and dates



# A typical school day

- School starts from 8.40 – 3.20pm.
- Soft start from 8.40-8.50am
- Prompt start at 8.55am
- Lunch – 11.50am-12.50pm
- No playtime – learn through play
- Home time – 3.20pm.



"Children learn as they play.  
More importantly, in play,  
children learn how to learn."

-O. Fred Donaldson

# School lunch provision

- Universal free school meals for all pupils.
- Lunch menu rotates every three weeks – hot or cold meal offer
- Children are free to choose a packed lunch on the days they prefer.
- First half term, Reception staff will support all children.



# Uniform expectations

- COMPULSORY - high expectations that correct uniform is adhered to.
- Can be purchased from Angels in Rayners Lane, Adams in Ruilsip Manor OR order online through 'My Clothing'
- Appropriate footwear – no boots/must have good grip.
- Correct PE kit in a draw string bag only. No back packs.
- **Personalised water bottle and PE top – we only provide the water bottle for all children**



# Day to day communication ...

- Daily communication
- Personal Organiser
- Pupil progress meetings - at least termly
  - October - settling in focus
  - December - care call
  - February - progress focus
  - April - care call
- End of Reception report - July



# How the school keeps you informed

- Friday Flyer



Weduc

- School website
- Parentpay - cashless school.
- Google classroom - Overview of weekly learning
- Letter confirming all login details.
- **Our expectation of you...**



# Breakfast and Afterschool provision

- Accessible for all children
- Operated by staff of Deanesfield Primary School
- Located on our school premises.
- Operates between 7.45am-8.45am (Breakfast Club); 3.15pm to 4.30pm or 6pm (can opt for an end time of either choices)

## WHAT WE OFFER:

- Healthy breakfast
- Stimulating environment with outside play area
- All staff DBS checked, familiar adults and experienced.



# Class fund

- **One-off yearly donation** at the start of the academic year via ParentPay.
- We will provide all classroom stationary and essential resources for all pupils in Nursery to Year 6 this academic year.
- Personalised school water bottle only – we will supply this (No home water bottles)
- All water bottles are cleaned regularly and topped up with fresh drinking water daily
- Class fund donation goes towards all resources as well as any end of year and Christmas celebrations.



# Key policies:

- EYFS Policy
- Behaviour Policy
- Social Media Policy
- All policies are accessible via school website



# Few General Reminders

1. Label all clothing  
– small draw  
string bag
2. Self – care needs  
– build  
independence  
(toileting, getting dressed,  
coats, etc)
3. Setting good  
eating habits
4. Smooth entrance  
in the morning.
5. Working in  
partnership – talk  
to us!
6. TALK  
MORE...WATCH  
LESS.
7. Transition videos



*Dream, Believe, Achieve... and Make a Difference*

# Supportive links

<https://wordsforlife.org.uk/activities/countdown-to-school-or-nursery/>

<https://foundationyears.org.uk/files/2021/09/What-to-expect-in-the-EYFS-complete-FINAL-16.09-compressed.pdf>

<https://www.nct.org.uk/baby-toddler/learning-talk-and-communication-your-baby/how-can-you-encourage-childs-language-development>

<https://speechandlanguage.org.uk/help-for-families/>

“**Words for Life**”



nct

**Speech and  
Language UK**   
Changing young lives.

*Dream, Believe, Achieve... and Make a Difference*



# Thank you and a huge welcome to Deanesfield Primary School



*A quick stop to Reception, come  
and have a look around  
Dream, Believe, Achieve... and Make a Difference*