



Welcome to Reception

September 2024



*Dream, Believe, Achieve... and
Make a Difference*

All about Deanesfield



Dream, Believe, Achieve... and Make a Difference

Meet the leadership team...



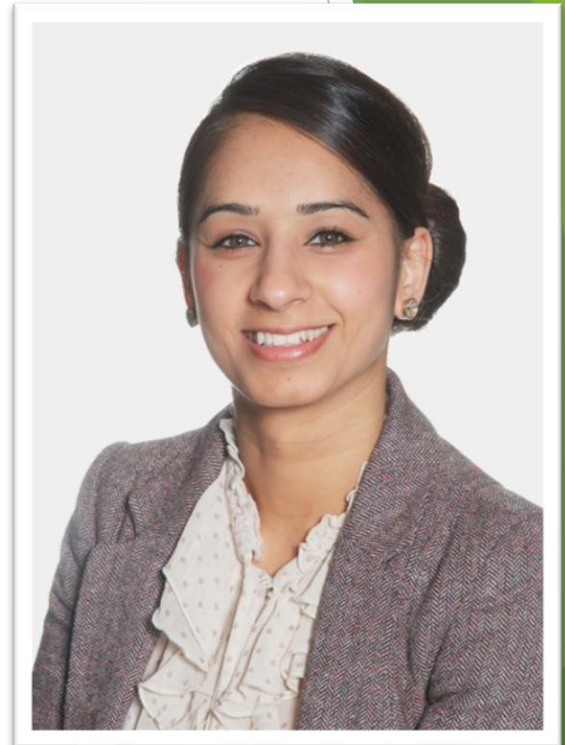
Ms O'Sullivan
Headteacher



Mrs Taylor
Deputy Head



Miss Ford
Inclusion Manager



Mrs Matharu
Head of Early Years
and KS1

Current Reception teachers...



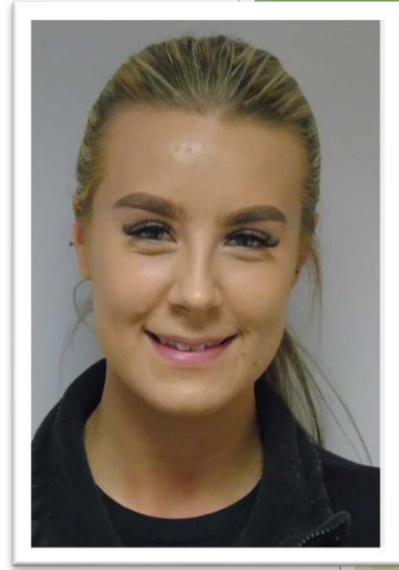
Class RP

Mrs Pemberton
Class Teacher



Class RP

Mrs Parrott
Class Teacher



Class RB

Miss Bradshaw
Class Teacher



Ms McGrath
SEND support
teacher

The Deanesfield Golden Charter

We are gentle

We are kind and helpful

We listen

We are honest

We work hard

We look after property



*Dream, Believe, Achieve... and
Make a Difference*

Our Early Years vision

- Our curriculum offer in Reception
- Enriched and enhanced learning
- Learning through play
- Early reading and phonics – fundamental block



- Our first topic and curriculum map
- Supporting learning at home – how?



Dream, Believe, Achieve... and Make a Difference



SAVE THE DATE:

Reception Curriculum Evening -
Thursday 26th September at
6.15pm

Phonics in practice - Week
beginning Monday 7th October
Phonics and reading workshop -
date to be confirmed

The recipe to a successful transition...

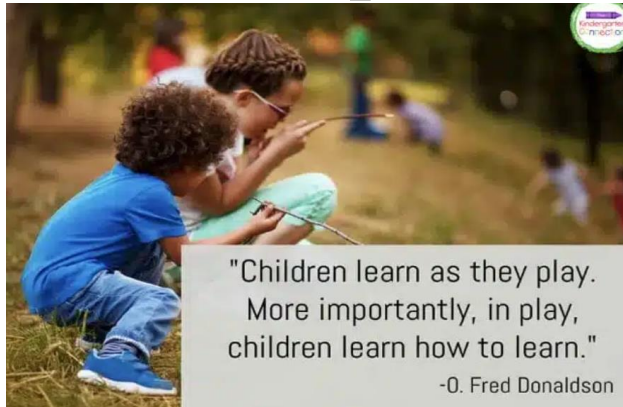
- Working in partnerships
- Tuesday Story Afternoon - 9th and 16th July
- Stay and Play sessions (3 sessions)
- Transition videos
- Official Start Date
- Is tailored to support individual children

* Refer to induction letter for further details and your allocated times and dates



A typical school day

- School starts from 8.40 – 3.20pm.
- Soft start from 8.40-8.55am
- Prompt start at 8.55am
- Children enter from Reception outdoor environment, situated up the walkway
- Lunch – 11.50am-12.50pm
- No playtime – learn through play
- Home time – 3.20pm.



"Children learn as they play.
More importantly, in play,
children learn how to learn."

-O. Fred Donaldson

School lunch provision

- Universal free school meals for all pupils.
- Lunch menu rotates every three weeks
- Children are free to choose a packed lunch on the days they prefer.
- First half term, Reception staff will support all children.



Uniform expectations

- Is compulsory - high expectations that correct uniform is adhered to.
- Can be purchased from Angels in Rayners Lane OR order online through 'My Clothing'
- Appropriate footwear – no boots.
- Correct PE kit in a draw string bag only. No back packs.
- **Personalised school rucksack, water bottle and PE top.**
We will provide the first one as our Welcome Gift.



Day to day communication...

- Daily communication
- Personal Organiser
- Pupil progress meetings - at least termly
1:1 contact with you.
- End of Reception report.
- General reminders



How the school keeps you informed

- Friday Flyer



Weduc

- School website
- Parentpay - cashless school.
- Google classroom - Overview of weekly learning
- Letter confirming all login details.
- **Our expectation of you...**



Breakfast and Afterschool provision

- Accessible for all children
- Operated by staff of Deanesfield Primary School
- Located on our school premises.
- Operates between 7.45am-8.45am (Breakfast Club); 3.15pm to 4.30pm or 6pm (can opt for an end time of either choices)

WHAT WE OFFER:

- Healthy breakfast
- Stimulating environment with outside play area
- All staff DBS checked, familiar adults and experienced.



Class fund

- We will be providing the classroom stationary for all children in Nursery to Year 6 this academic year.
- We will be supplying each child in Reception a new school water bottle.
- All water bottles are cleaned regularly and topped up with fresh drinking water on a daily basis.
- No home water bottles to be brought in.
- One-off yearly donation at the start of the academic year via ParentPay.
- This cost will also include any end of year and Christmas celebrations.

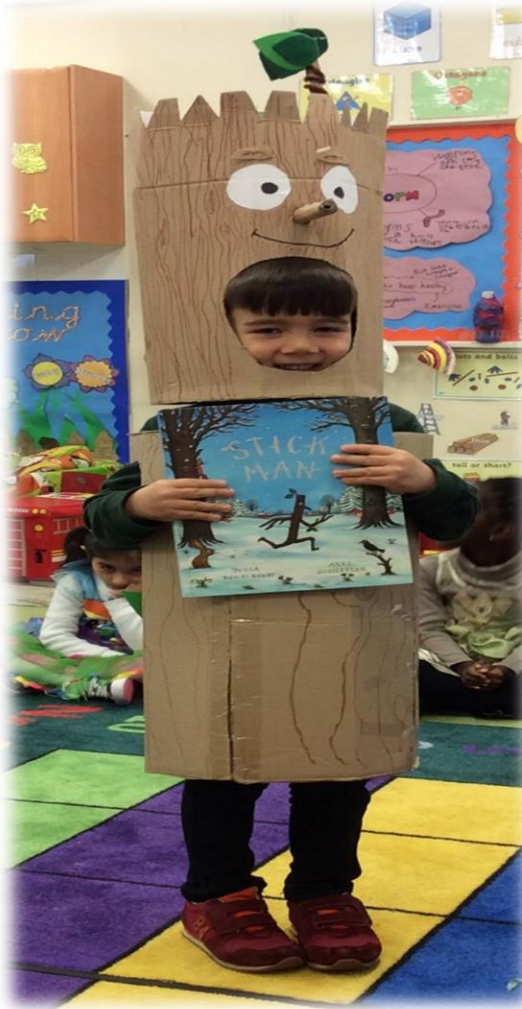


Key policies:

- EYFS Policy
- Behaviour Policy
- Social Media Policy
- All policies are accessible via school website



Few General Reminders



Dream, Believe, Achieve... and Make a Difference

Supportive links

<https://wordsforlife.org.uk/activities/countdown-to-school-or-nursery/>



<https://foundationyears.org.uk/files/2021/09/What-to-expect-in-the-EYFS-complete-FINAL-16.09-compressed.pdf>



<https://www.nct.org.uk/baby-toddler/learning-talk-and-communication-your-baby/how-can-you-encourage-childs-language-development>



<https://speechandlanguage.org.uk/help-for-families/>



Dream, Believe, Achieve... and Make a Difference



Thank you and a huge welcome to Deanesfield Primary School



Dream, Believe, Achieve... and Make a Difference